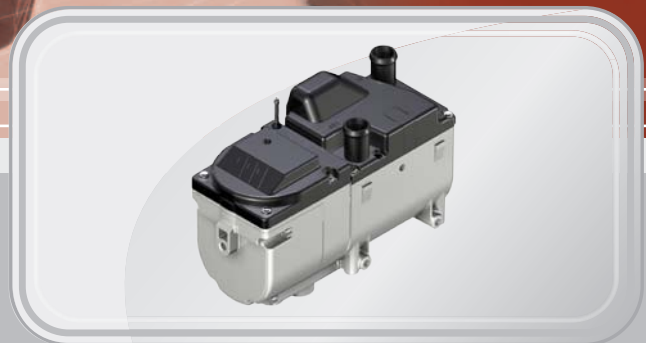


SPARE PARTS LIST

HYDRONIC II



THE SPARE PARTS LIST IS ONLY VALID FOR THE FOLLOWING ENGINE-INDEPENDENT WATER HEATERS

Heaters for petrol

B 4 S – 12 V 20 1909 05 00 00
 B 5 S – 12 V 20 1904 05 00 00

Heaters for diesel

D 4 S – 12 V 25 2554 05 00 00
 D 4 S – 12 V 25 2558 05 00 00
 (with inlet pressure resistant metering pump)
 D 5 S – 12 V 25 2526 05 00 00
 D 5 S – 12 V 25 2557 05 00 00
 (with inlet pressure resistant metering pump)

INFORMATION

DETERMINATION OF THE QUANTITY REQUIRED FOR THE ORDER

To determine the quantity of a spare part required and the "VEs" (sales units) to order, use the information in the "Number of units per device" and "Number of units per VE" (sales unit or stock-keeping unit)".

NUMBER OF UNITS PER DEVICE

The number in this column indicates how many units of the spare part concerned are installed in the whole device.

NUMBER OF UNITS PER VE

The number in this column indicates how many units of the spare part concerned are included in one sales unit (VE).

ORDER NO.

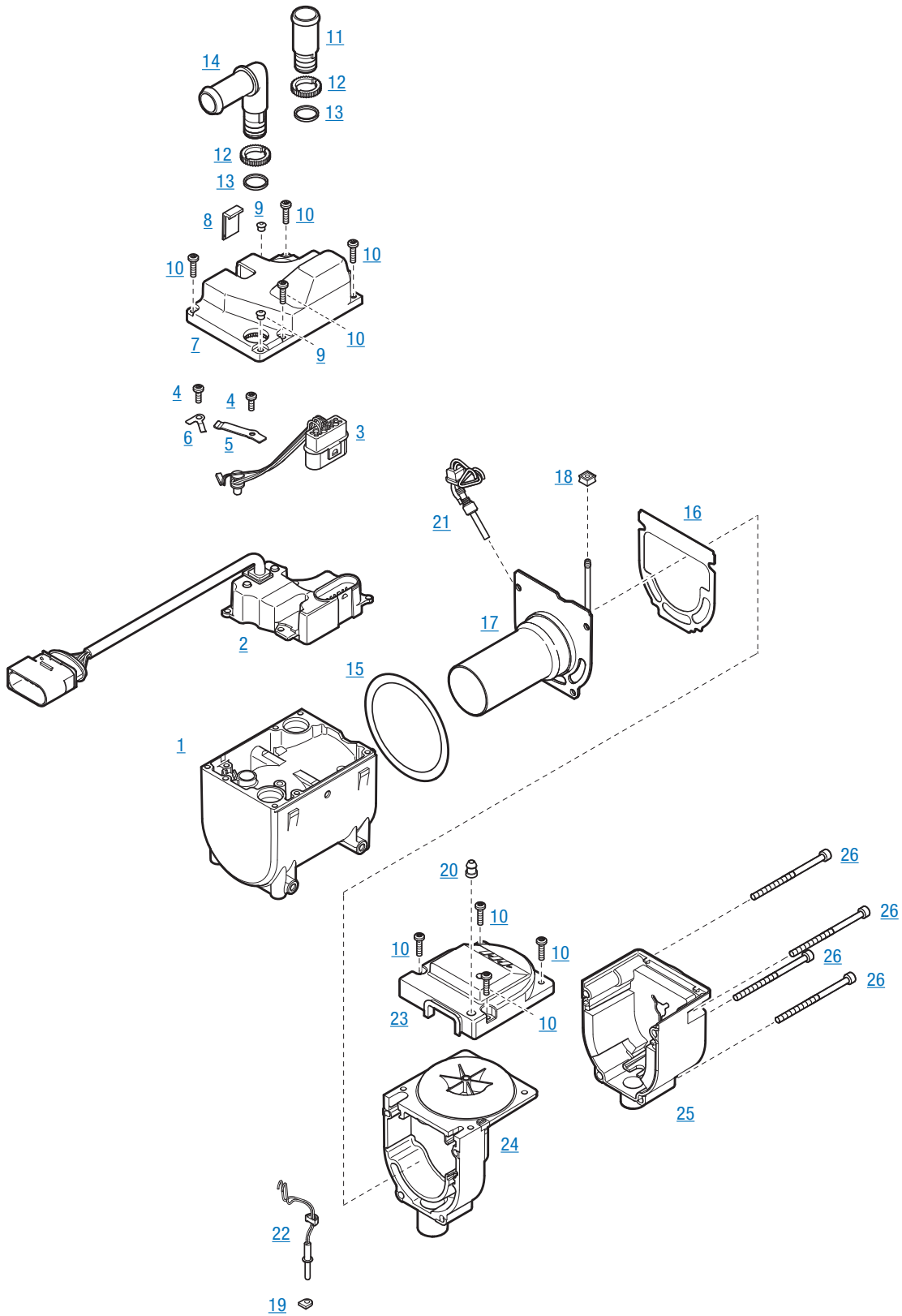
The order number relates to one sales unit.

CONTENTS

CHAPTER	TITLE	CONTENT	PAGE
1	Heater	Spare parts diagram	4
		Spare parts list	5
2	Installation, water and combustion air system	Spare parts diagram	9
		Spare parts list	10
3	Electrics and fuel system	Spare parts diagram	11
		Spare parts list	12

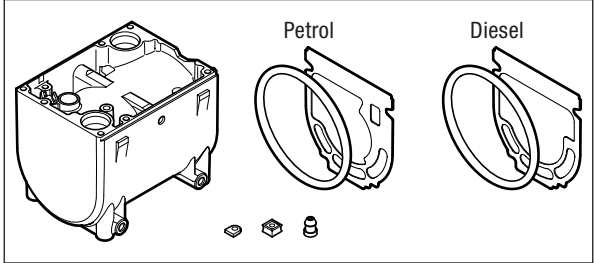
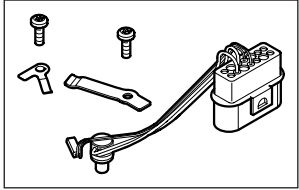
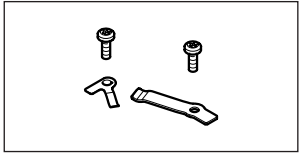
1 HEATER

SPARE PARTS DIAGRAM

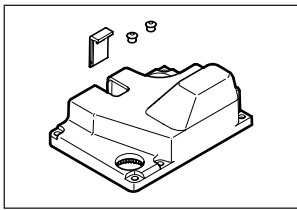
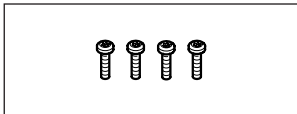
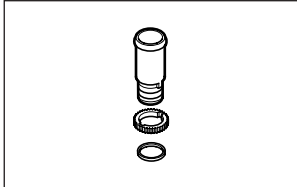
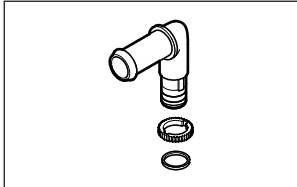


1 HEATER

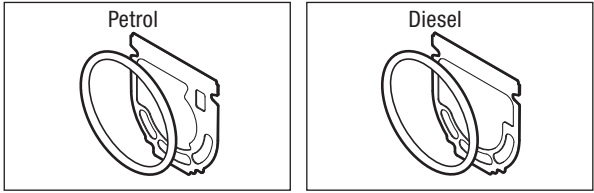
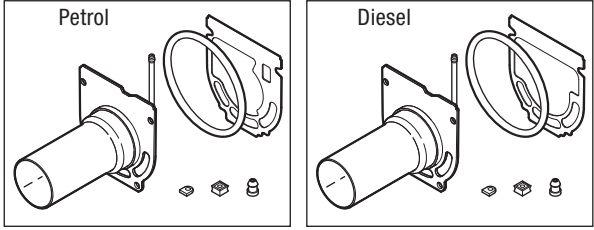
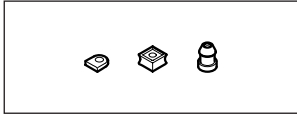
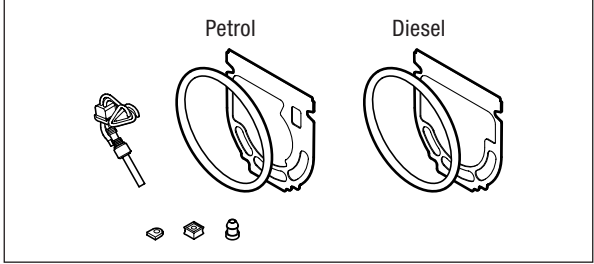
SPARE PARTS LIST

Item No.	Number of units per device	Number of units per VE	Designation	Order No. (VE)	For device					
					20 1909 05	20 1904 05	25 2554 05	25 2526 05	25 2557 05	25 2558 05
1	1	–	Jacket and heat exchanger	See Item 1.1						
1.1	1	1	Jacket and heat exchanger kit includes: Item 1 , 15 , 16 , 18 , 19 , 20	25 2526 01 01 00	•	•	•	•	•	•
										
2	1	1	Control box	22 5206 01 00 02 22 5206 01 20 02 22 5206 01 00 01 22 5206 01 20 01 22 5206 01 00 03 22 5206 01 20 03		•				
3	1	–	Lead harness, heater	See Item 3.1						
3.1	1	1	Lead harness kit, heater includes: Item 3 , 4 , 5 , 6	25 2526 99 01 21	•	•	•	•	•	•
										
4	2	–	Screw, M4 x 12	See Item 6.1						
5	1	–	Compression spring, overheating sensor	See Item 6.1						
6	1	–	Compression spring, surface sensor	See Item 6.1						
6.1	1	1	Compression spring kit includes: Item 4 , 5 , 6	25 2526 99 01 08	•	•	•	•	•	•
										

1 HEATER

Item No.	Number of units per device	Number of units per VE	Designation	Order No. (VE)	For device					
					20 1909 05	20 1904 05	25 2554 05	25 2526 05	25 2557 05	25 2558 05
7	1	–	Cover, control box	See Item 7.1						
7.1	1	1	Cover kit, control box includes: Item 7 , 8 , 9	25 2526 05 00 11	•	•	•	•	•	•
										
8	1	1	Cover, cable, control box	25 2281 01 00 06	•	•	•	•	•	•
9	2	–	Ribbed insert	See Item 7.1						
10	8	–	Screw, M4 x 16	See Item 10.1						
10.1	2	1	Screw kit, M4 x 16 (4 screws) includes: Item 10	25 2526 99 00 31	•	•	•	•	•	•
										
11	2	–	Water pipe socket, straight, di = ø 20 mm	See Item 11.1						
11.1	1	1	Water pipe socket kit, straight, di = ø 20 mm includes: Item 11 , 12 , 13	25 2526 99 01 06	•	•	•	•	•	•
										
12	2	2	Toothed ring	25 2216 01 00 10	•	•	•	•	•	•
13	2	4	O-ring, 16 x 2	22 1000 70 00 19	•	•	•	•	•	•
14	2	–	Water pipe socket, 90°, di = ø 20 mm	See Item 14.1						
14.1	1	1	Water pipe socket kit, 90°, di = ø 20 mm includes: Item 12 , 13 , 14	25 2526 80 03 00	•	•	•	•	•	•
										

1 HEATER

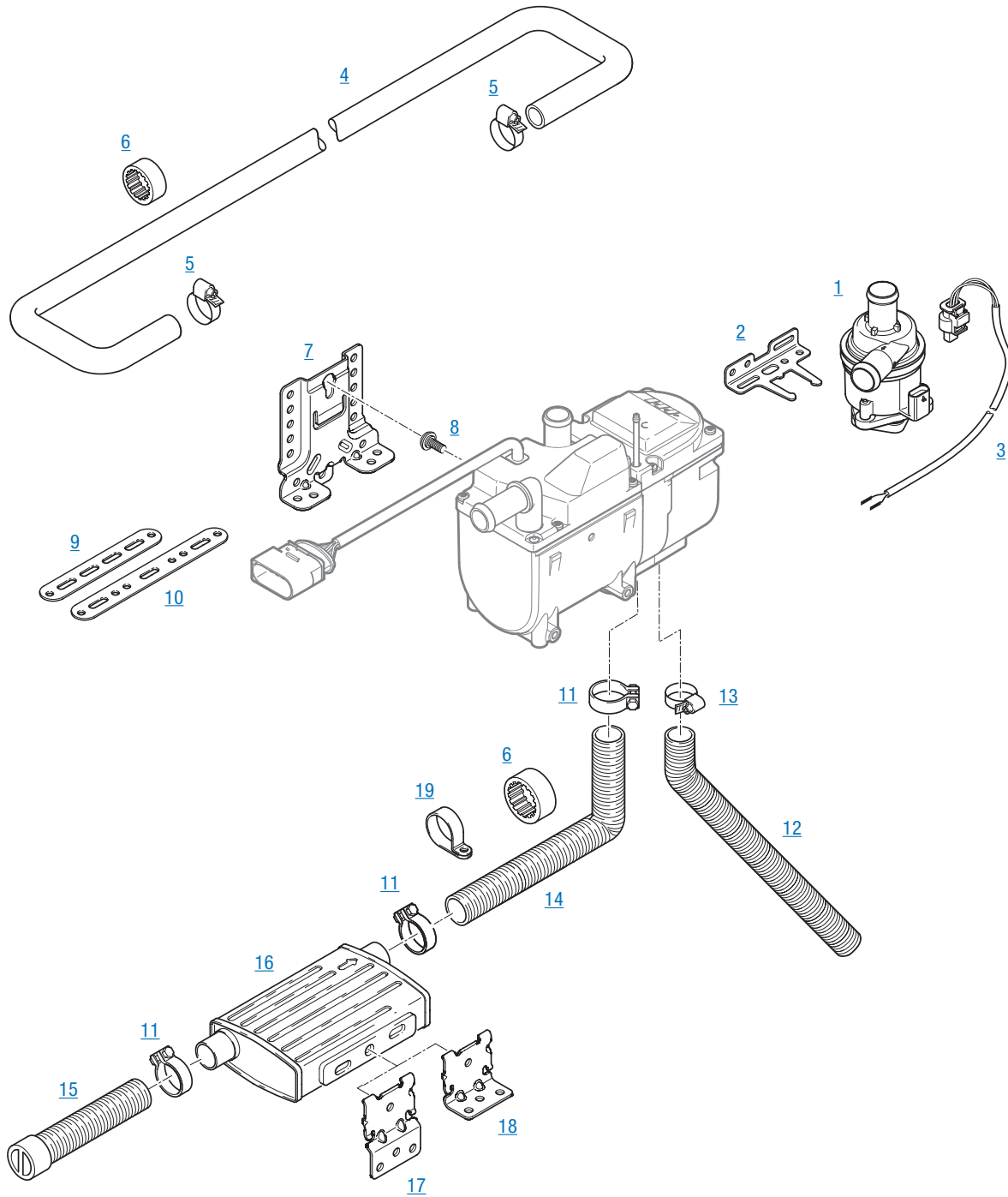
Item No.	Number of units per device	Number of units per VE	Designation	Order No. (VE)	For device					
					20 1909 05	20 1904 05	25 2554 05	25 2526 05	25 2557 05	25 2558 05
15	1	–	Seal, combustion chamber flange / heat exchanger	See Item 16.1						
16	1	–	Seal, combustion chamber housing / fan	See Item 16.1						
16.1	1	1	Seal kit includes: Item 15, 16	20 1904 99 01 11 25 2526 99 01 10	•	•				
										
17	1	–	Combustion chamber	See Item 17.1						
17.1	1	1	Combustion chamber kit includes: Item 15, 16, 17, 18, 19, 20	20 1904 10 00 00 25 2526 10 00 00	•	•				
										
18	1	–	Grommet, fuel pipe	See Item 20.1						
19	1	–	Grommet, flame sensor	See Item 20.1						
20	1	–	Grommet, fuel pipe	See Item 20.1						
20.1	1	1	Grommets kit for combustion chamber includes: Item 18, 19, 20	25 2526 99 01 04	•	•	•	•	•	•
										
21	1	–	Glow plug	See Item 21.1						
21.1	1	1	Glow plug kit includes: Item 15, 16, 18, 19, 20, 21	25 2526 99 01 11	•	•	•	•	•	•
										

1 HEATER

Item No.	Number of units per device	Number of units per VE	Designation	Order No. (VE)	For device					
					20 1909 05	20 1904 05	25 2554 05	25 2526 05	25 2557 05	25 2558 05
22	1	–	Sensor, flame monitoring	See Item 22.1						
22.1	1	1	Sensor kit, flame monitoring includes: Item 15 , 16 , 18 , 19 , 20 , 22	25 2526 99 36 00	•	•	•	•	•	•
23	1	1	Cover, fan, with seal	25 2424 01 03 00	•	•	•	•	•	•
24	1	–	Fan	See Item 24.1						
24.1	1	1	Fan kit includes: Item 15 , 16 , 18 , 19 , 20 , 24	25 2526 99 15 00	•	•	•	•	•	•
25	1	1	Cover, electric motor, complete	25 2424 01 04 00	•	•	•	•	•	•
26	4	–	Screw, M5 x 80	See Item 26.1						
26.1	1	1	Screw kit, M5 x 80 (4 screws) includes: Item 26	25 2278 01 00 30	•	•	•	•	•	•

2 INSTALLATION, WATER AND COMBUSTION AIR SYSTEM

SPARE PARTS DIAGRAM



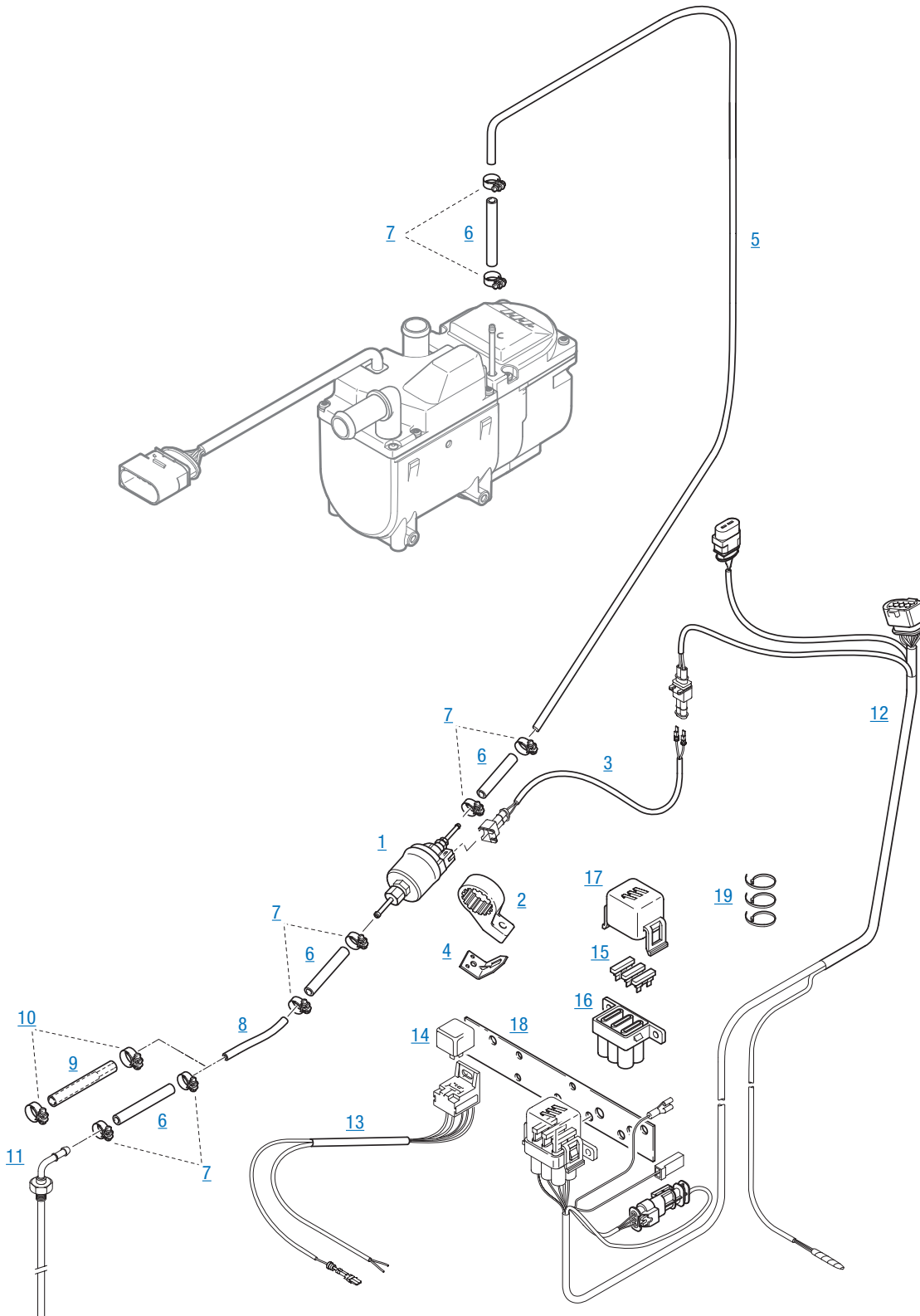
2 INSTALLATION, WATER AND COMBUSTION AIR SYSTEM

SPARE PARTS LIST

Item No.	Number of units per device	Number of units per VE	Designation	Order No. (VE)	For device					
					20 1909 05	20 1904 05	25 2554 05	25 2526 05	25 2557 05	25 2558 05
1	1	1	Water pump, 12 V	25 2526 25 00 00	•	•	•	•	•	•
2	1	1	Bracket, water pump	22 1000 51 39 00	•	•	•	•	•	•
3	1	1	Lead harness, 12 V, L = 2 m	25 2526 80 12 00	•	•	•	•	•	•
4	–	1	Hose, water, di = ø 20 mm	25 1917 80 00 01	•	•	•	•	•	•
5	–	1	Hose clip, 20 - 32 mm	10 2067 02 00 32	•	•	•	•	•	•
6	–	1	Ring, 21 / 40	22 1000 50 10 02	•	•	•	•	•	•
7	1	1	Bracket, heater	22 1000 51 37 00	•	•	•	•	•	•
8	1	1	Special screw	25 2526 80 01 01	•	•	•	•	•	•
9	–	1	Bracket, straight, L = 135 mm	22 9000 50 93 05	•	•	•	•	•	•
10	–	1	Bracket, straight, L = 180 mm	22 9000 50 93 06	•	•	•	•	•	•
11	3	1	Clip	22 1000 50 05 00	•	•	•	•	•	•
12	1	1	Double pipe, combustion air, sound absorbing, di = ø 20 mm	360 00 179	•	•	•	•	•	•
13	1	1	Hose clip, 16 - 25 mm	10 2067 01 60 25	•	•	•	•	•	•
14	1	1	Hose, exhaust, di = ø 24 mm, L = 900 mm	360 61 274	•	•	•	•	•	•
15	1	1	Hose, exhaust, di = ø 24 mm, L = 300 mm with end sleeve	20 1731 80 04 00	•	•	•	•	•	•
16	1	1	Exhaust silencer	22 1000 40 19 00	•	•	•	•	•	•
17	1	1	Bracket, exhaust silencer, Z-shape	22 1000 51 35 00	•	•	•	•	•	•
18	1	1	Bracket, exhaust silencer, L-shape	22 1000 51 34 00	•	•	•	•	•	•
19	–	1	Clip, ø 28 mm	152 09 010	•	•	•	•	•	•

3 ELECTRICS AND FUEL SYSTEM

SPARE PARTS DIAGRAM



3 ELECTRICS AND FUEL SYSTEM

SPARE PARTS LIST

Item No.	Number of units per device	Number of units per VE	Designation	Order No. (VE)	For device					
					20 1909 05	20 1904 05	25 2554 05	25 2526 05	25 2557 05	25 2558 05
1	1	1	Fuel metering pump, 12 V	22 4517 08 00 00 22 4549 01 00 00	•	•	•	•	•	•
2	1	1	Bracket, fuel metering pump	22 1000 50 04 00	•	•	•	•	•	•
3	1	1	Lead harness, fuel metering pump, L = 6 m	25 2526 80 11 00	•	•	•	•	•	•
4	–	1	Bracket	20 1348 03 00 02	•	•	•	•	•	•
5	–	m	Pipe, 1.25 DIN 73378, transparent	890 31 118	•	•	•	•	•	•
6	–	m	Hose, 3.5 × 3	360 75 400	•	•	•	•	•	•
7	8	1	Hose clip, ø 9 mm	10 2068 00 90 98	•	•	•	•	•	•
8	–	m	Pipe, 4 x 1, DIN 73378, blue	890 31 054	•	•	•	•	•	•
9	1	1	Adapter, ø 7.5 / 3.5 mm	22 1000 20 30 00	•	•	•	•	•	•
10	2	1	Hose clip, ø 11 mm	10 2068 01 10 98	•	•	•	•	•	•
11	1	1	Tank connection, di = ø 4 mm	22 1000 20 16 00	•	•	•	•	•	•
12	1	1	Cable harness, heater	25 2526 80 10 00	•	•	•	•	•	•
13	1	1	Cable harness, fan	22 1000 33 04 00	•	•	•	•	•	•
14	1	1	Relay, 12 V	203 00 095	•	•	•	•	•	•
15	1	1	Fuse insert, 5 A	204 00 079	•	•	•	•	•	•
			Fuse insert, 25 A	204 00 089	•	•	•	•	•	•
			Fuse insert, 20 A	204 00 004	•	•	•	•	•	•
16	1	1	Fuse holder, housing, receptacle	22 1000 31 06 01	•	•	•	•	•	•
17	1	1	Fuse holder, cover	22 1000 31 06 02	•	•	•	•	•	•
18	1	1	Combined bracket	22 1000 51 21 00	•	•	•	•	•	•
19	–	1	Set of cable ties	25 2526 99 80 07	•	•	•	•	•	•
			- 10 No. 2.5 x 100 mm							
			- 20 No. 5.0 x 200 mm							
			- 5 No. 4.6 x 390 mm							

Headquarters:

J. Eberspächer GmbH & Co. KG

Eberspächerstraße 24

D - 73730 Esslingen

Hotline: 0800 1234300

Fax hotline: 01805 262624

info@eberspaecher.com

www.eberspaecher.com

